

# MINIATURA - Technical rider and Lighting plot:

Direction, choreography and dance: Roser López Espinosa  
Mobile: 0034 697555468  
E-mail: roserlopez@hotmail.com

Lighting design / Technical chief: Katinka Marac  
E-mail: kmarac@xs4all.nl

Lighting technician 2: Israel Quintero  
Mobile: 0034 676848174  
E-mail: isquiro@hotmail.com

## Number of people travelling: 3

- 2 dancers (one of them is the choreographer herself)
- 1 lighting technician

## Performance

Duration of performance: 35 minutes  
Dancers: 2  
Technicians: 2

## Building up

Building up time: 5 - 6 hours  
Breaking down time: X  
Amount of technicians from the theatre: 2

## Performing space

Minimum dimensions: 8 m depth x 9 m width  
(In case of 8m x 8m, please let us know in advance in order to study an adaptation)

Space: **White box with white horizon curtain for video projection**  
Floor: Black linoleum  
Set / props on stage: **1 video projector (provided by the theatre)**  
**1 video shutter (provided by the theatre)**  
1 video camera (provided by the company)  
1 table lamp (provided by the company)

## Light

See lighting plot.  
It can be adapted, according to the space and available equipment.

Amount of lights: 30  
Amount of channels / dimmers: 24  
Lighting sequences: 42  
Colour gels: Lee 251, Lee 203 y Lee 053

## Video:

Equipment needs:

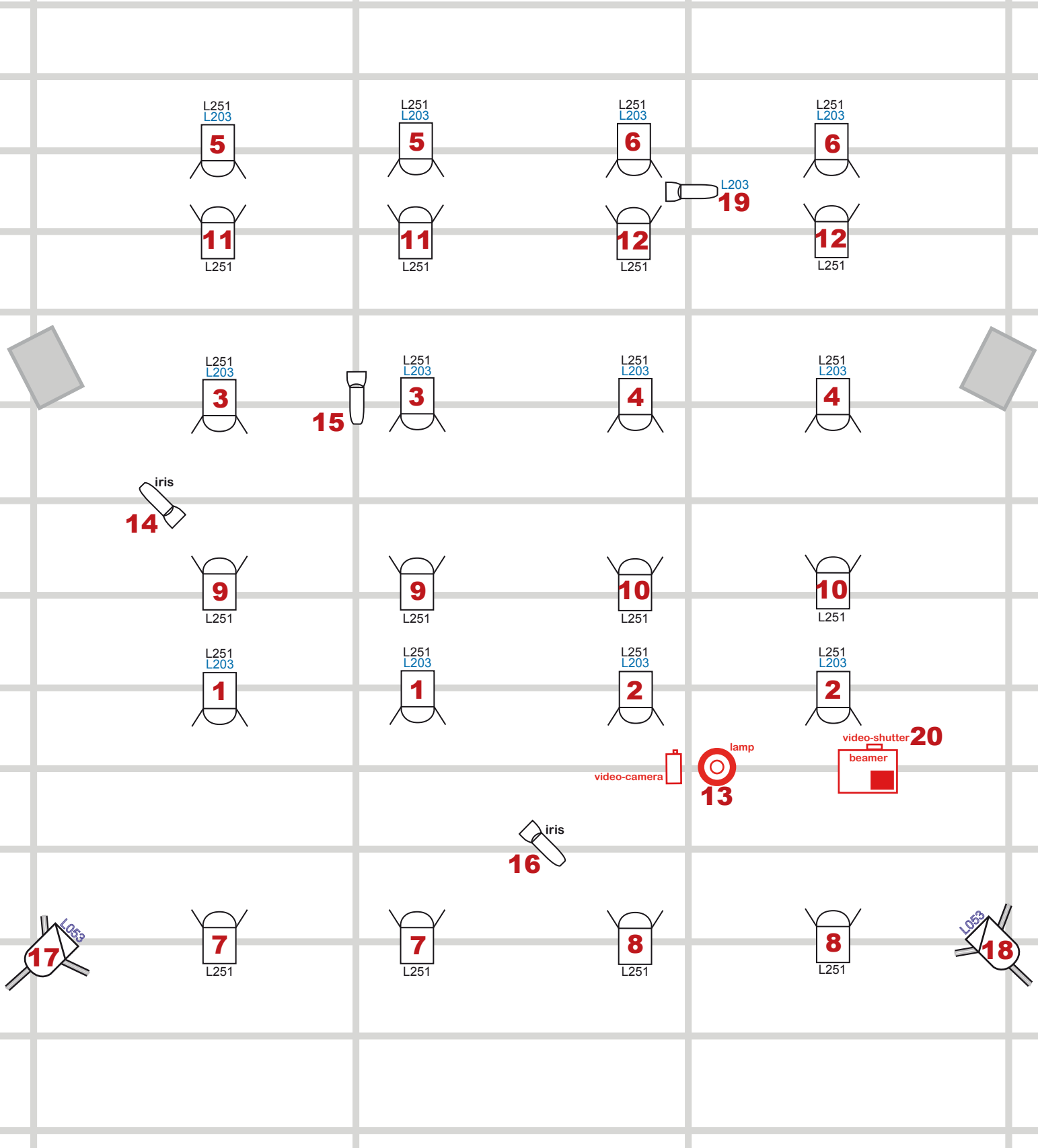
- 1 video projector, preferably dlp / 4000 lumen +, with manual focus at the lens (not by remote control)
- 1 video shutter dmx controlled from the lighting board
- 1 DVD player
- connexion cables for the equipment

## IMPORTANT:

- **The camera, the video projector and the video shutter are positioned on the floor.**
- **The video projector is positioned at approx. 8m from the back horizon curtain. The video image projected on the horizon should be approx. 3,5m wide.**
- **The performers manipulate the source input cable directly from the video beamer on stage.**
- **The performers manipulate the focus of the video beamer directly at the lens on stage, not by remote control.**
- **The DVD player is operated from the technical booth.**





## Sound

Equipment needs: 1 sound equipment with amplifier and 2 speakers  
1 CD player



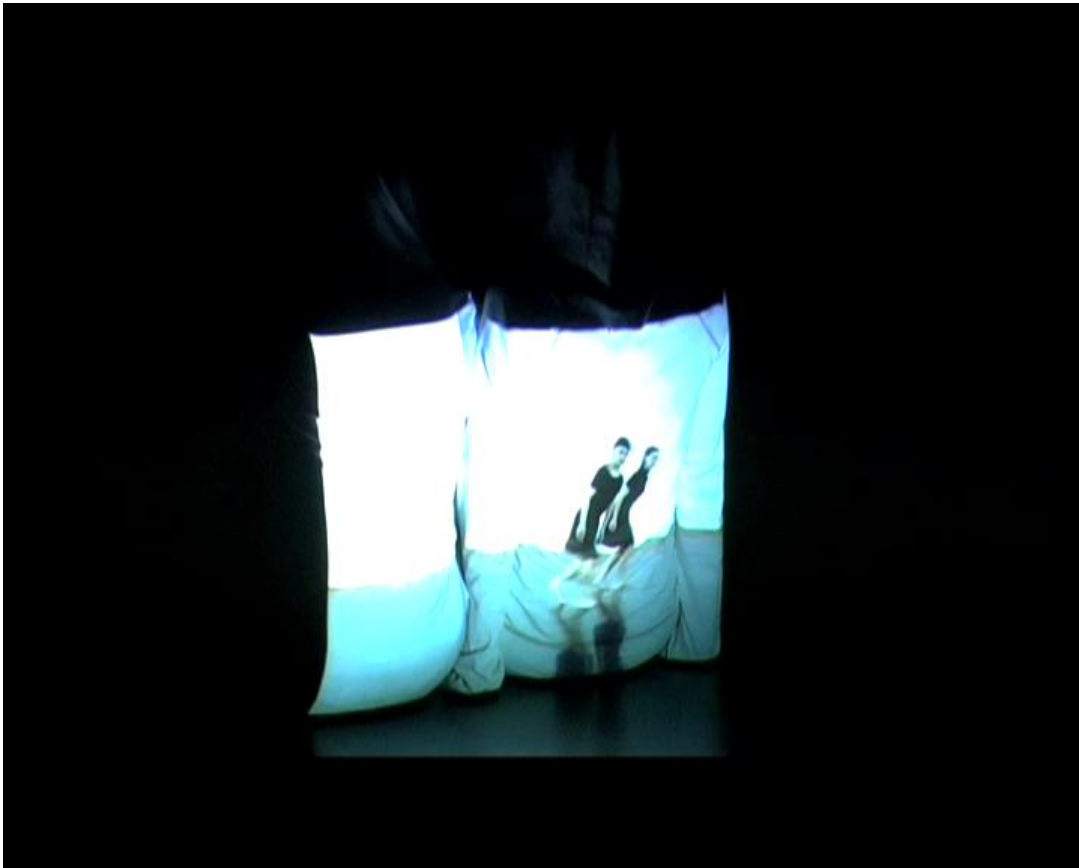
**audience**

**MINIATURA**  
*by Roser López Espinosa*

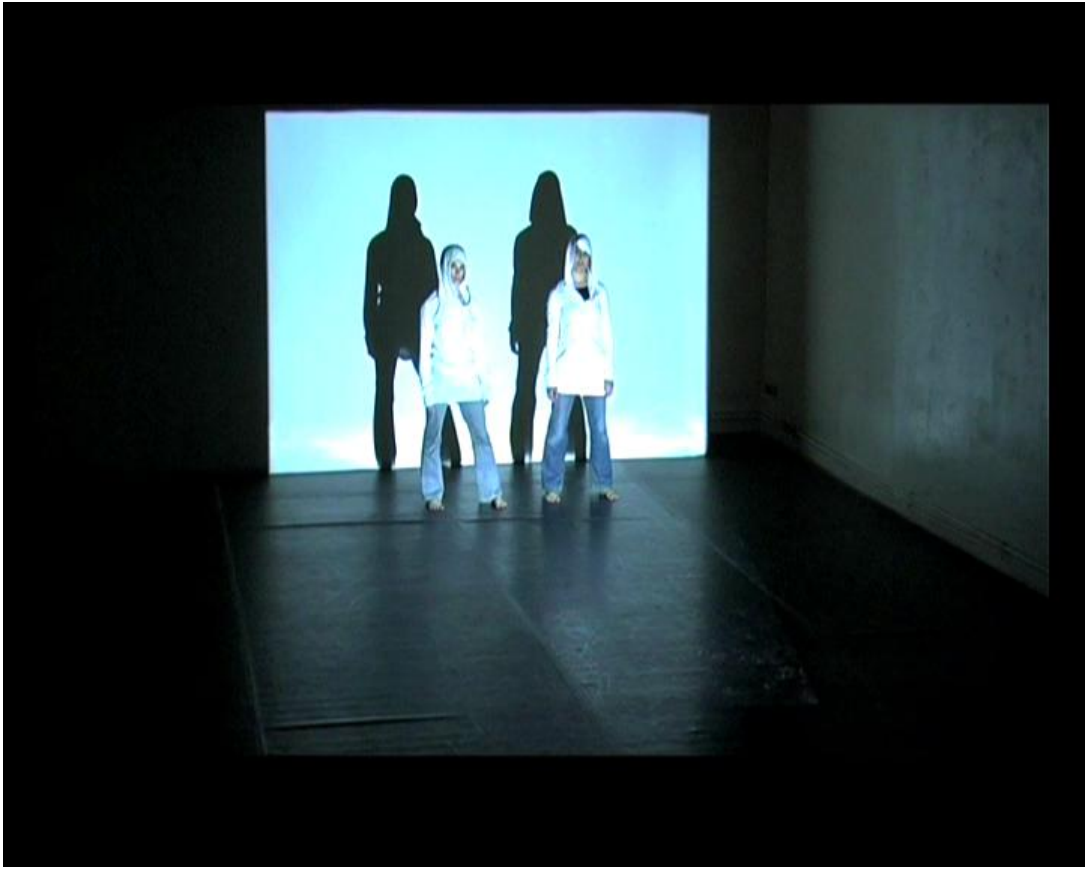
-  Par 64 CP62 1k
-  Profile ETC 575w
-  PC barndoors 1k
-  speaker

Lighting Design  
*Katinka Marac*

MINIATURA by Roser Lopez Espinosa



performers sitting on the floor, in front of a video beamer + videoshutter



performers standing in front of the video beamer



2 performers creating a life video scene.



The dimension of the projected video image is about  $1/3$  of the cyclorama.  
The distances from the beamer/shutter, video camera and little lamp to the cyclorama is about 8 m.



Backlight special.